



BEAUFORT GREEN



Waldemar Avenue, SW6

£600,000



Absolutely Best-in-Class One-Bedroom Apartment in Waldemar Avenue Mansions

A truly exceptional one-bedroom lateral apartment set within a stunning red-brick mansion block on the much-sought-after Waldemar Avenue, one of Fulham's most desirable tree-lined addresses.

This beautifully presented home offers a spacious living room with an elegant fire-place focal point, creating a warm and inviting space ideal for both relaxing and entertaining. The separate kitchen is a chef's delight, featuring a dedicated pantry and premium worktops that blend practicality with style.





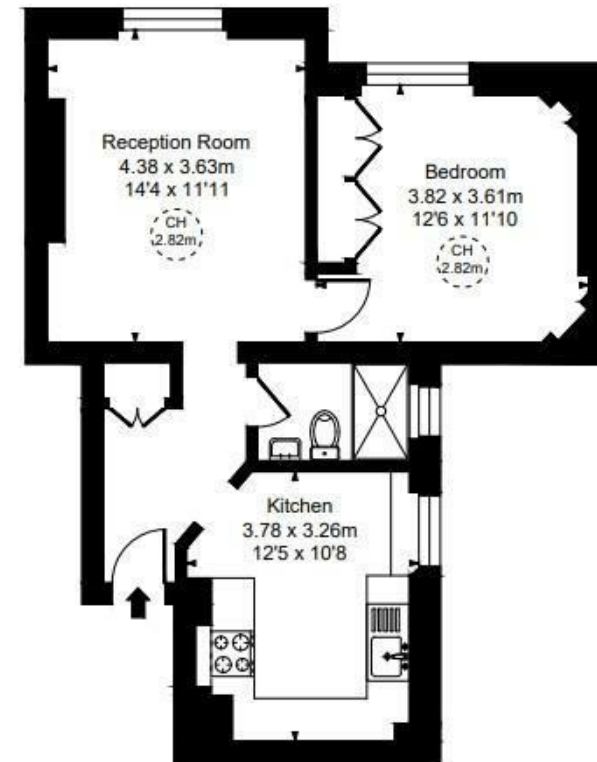
BEAUFORT GREEN



BEAUFORT GREEN

Waldemar Avenue Mansions, SW6

Approximate Gross Internal Area
52.18 sq m / 562 sq ft
(CH = Ceiling Heights)



Second Floor

At a Glance.

- Best in Class Finish
- Lateral One Bedroom Apartment
- Ample Storage
- Beautiful Kitchen
- Working Fire Place
- Bright and Spacious

This plan is not to scale. It is for guidance and not for valuation purposes.
All measurements and areas are approximate only, and have been prepared in accordance with the current edition of the RICS Code of Measuring Practice.

BEAUFORT GREEN

02074594100

charlie@beaufortgreen.co.uk

263 New Kings Road
London
SW16 1DB